

ASSOCIATION OF GSTT1 AND GSTM1 GENE POLYMORPHISMS WITH SUSCEPTIBILITY TO AUTOIMMUNE DISEASES: A PRELIMINARY STUDY

Darko V. Grujić^{1*}, Marina Z. Radović Jakovljević¹, Olgica B. Mihaljević²,
Snežana T. Živančević-Simonović², Olivera M. Milošević-Djordjević^{1,3}

¹ University of Kragujevac, Serbia, Faculty of Science, Department of Biology and Ecology,
Radoja Domanovića 12, 34000 Kragujevac, Serbia

² University of Kragujevac, Serbia, Faculty of Medical Sciences,

Department of Pathophysiology, Svetozara Markovića 69, 34000 Kragujevac, Serbia

³ University of Kragujevac, Serbia, Faculty of Medical Sciences, Department of Genetics,
Svetozara Markovića 69, 34000 Kragujevac, Serbia

*Corresponding author; E-mail: darko@kg.ac.rs

(Received March 1st, 2018; Accepted May 9th, 2018)

ABSTRACT. Autoimmune diseases (ADs) are chronic conditions initiated by the loss of immunological tolerance to self-antigens. The aim of this study was to determine how polymorphisms of glutathione S-transferases T1 and M1 (GSTT1 and GSTM1) genes influence the occurrence of two autoimmune diseases: multiple sclerosis (MS) and Hashimoto's thyroiditis (HT). A multiplex polymerase chain reaction (PCR) was used to detect the deletions in GSTT1 and GSTM1 genes. Our results showed that patients with ADs had significantly higher ($p < 0.05$) frequency of GSTM1 null genotype compared to controls (44.4% vs. 0.0%, respectively). However, the homozygous deletion of both analyzed genes (GSTT1 null/GSTM1 null) showed no significant differences between these genotypes in the patients and controls (11.1% vs 0.0%, respectively). Our results showed that observed differences in the distribution of GSTT1 and GSTM1 null genotype in patients depending on the diagnosis (MS or HT) when compared to the same frequency of genotypes in control, were not statistically significant ($p > 0.05$). This study suggests the potential role of GSTM1 deletion on ADs susceptibility, but on the other hand this study should be repeated in other patients with the same or similar diagnosis of ADs.

Keywords: polymorphisms of GSTT1 and GSTM1 genes, multiplex polymerase chain reaction, multiple sclerosis, Hashimoto's thyroiditis.

INTRODUCTION

Autoimmune diseases (ADs) are chronic conditions initiated by the loss of immunological tolerance to self-antigens (TODOROVIĆ-ĐILAS *et al.*, 2011). It is a heterogeneous group of disorders in which multiple changes in the immune system can be specific to a particular tissue or organ or may be systemic, non-specific, involving multiple tissues or organs (RAY *et al.*, 2012). Literary data indicate that more than 80 clinically

different diseases have been identified, including multiple sclerosis (MS) and Hashimoto's thyroiditis (HT) (ANTONIOU *et al.*, 2010).

MS is a demyelinating, inflammatory disease of central nervous system (CNS) that affects young adults (LEE *et al.*, 2015). HT is characterized by lymphocytic infiltration that leads to disruption of the tissue architecture of the thyroid gland, resulting in a progressive loss of thyroid function (ACHARYA *et al.*, 2014). It is one of most frequent ADs responsible causes of morbidity in women, with four females and one male person in 1,000 inhabitants a year diagnosed with autoimmune thyroid inflammation (ĐURICA and VUKSANOVIĆ, 2005; GERENOVA and GADJEVA, 2007).

ADs have a multifactorial etiology, so the underlying factors in the development of autoimmunity are genes of susceptibility such as human leucocyte antigen (HLA) genes that affect the loss of tolerance (GOUGH and SIMMONDS, 2007). The environmental factors that can trigger autoreactive lymphocytes are infections (PENDER and GREER, 2007), exposure to chemicals, xenobiotics, toxins, or stress (ERMANN and FATHMAN, 2001; RIEGER and GERSHWIN, 2007).

Numerous studies reported that oxidative stress (OS) play a mayor role in pathophysiology of various diseases, including ADs (WEST, 2000; CILENŠEK *et al.*, 2012; ADAMCZYK *et al.*, 2017). OS is the result of an imbalance between the amount of reactive oxygen species (ROS) and the capacity of antioxidant defence systems (ALLEN and TRESINI, 2000). Glutathione S-transferases (GSTs) are a family detoxifications enzymes that are essential for the biotransformation of xenobiotics and carcinogens as well as cell protection against OS. The products of GSTT1 and GSTM1 genes are enzymes glutathione S-transferases T1 and M1, which carry out important detoxificatioous processes of xenobiotics in organism. Homozygous deletion of these genes (null genotype) results in the total absence of enzymatic activity and leads to an inability of xenobiotics elimination from organisms, it accumulates and manifest their harmful effects (GARTE *et al.*, 2001).

Considering that oxidative damages to biomolecules increased the risk of ADs as well as that GST enzymes are the main endogenous antioxidant protection system in eliminations of free radicals, the aim of this study was to examine the association of GSTT1 and GSTM1 polymorphisms influences on the occurrence of both diseases, MS and HT.

MATERIALS AND METHODS

Patients

Polymorphisms of GSTT1 and GSTM1 genes was analysed in 18 persons: eight patients of ADs and eight healthy individuals who presented control sample. In sample ADs patients it was four patients with MS and five patients with HT diagnosis, mean age 44.89 ± 9.71 ; and range 32-60. The control group was of mean age 46.11 ± 7.51 ; range 36-58, without past histories of neurodegenerative disorders. The study was approved by Ethical Committee of the Clinical Centre Kragujevac. All patients and control subjects gave written informed consent according to the Helsinki Declaration.

Genomic DNA isolation and genotype analysis of GSTT1 and GSTM1 polymorphisms

Genomic DNA from whole peripheral blood was extracted automatically by Biorobot EZ1. After that, the concentration of DNA in each sample was calculated by biphotometer (Eppendorf, Hamburg, Germany), and polymerase chain reaction, PCR (Eppendorf,

Hamburg, Germany) was carried out. Visualization of amplified products was achieved by electrophoresis on 2% agarose gel.

Genomic DNA was isolated from 350 µl of whole peripheral blood using automatically a Biorobot the EZ1 DNA Blood 350 µl Kit (Qiagen, Hilden, Germany) and BioRobot EZ1 (Qiagen, Hilden, Germany), following the manufacturer's instructions.

To determine the GSTT1 and GSTM1 genotypes a multiplex PCR method was carried simultaneously, as described in ABDEL-RAHMAN *et al.* (1996) with little modifications. In 50 µl PCR reaction mix containing 30 pmol of each of primers (GSTT1, GSTM1 and CYP1A1, Invitrogen, California, USA), 200 µM of each deoxynucleotide triphosphate (Invitrogen, California, USA), 1.5 mM of MgCl₂, 1X PCR buffer, two units of Taq polymerase (Invitrogen, California, USA), 5% dimethyl sulfoxide (DMSO), 5% glycerol, 50 ng of template DNA was amplified. PCR cycles consisted of an initial denaturation at 94°C for 5 minutes, 35 cycles of denaturation at 94°C for 2 minutes, annealing for 1 minute at 58°C and extension at 72°C for 1 minute, followed by a final extension step for 10 minutes at 72°C, were performed, after initiative denaturation at 94°C for 5 minutes.

PCR products were separated and analyzed on 2% agarose gel stained with SYBER Safe DNA gel stain (Invitrogen, California, USA). The presence of 480 bp band corresponds to GSTT1 positive genotype while 215 bp band corresponds to GSTM1 positive genotype. The band of internal control CYP1A1 (312 bp) was always present (Table 1).

Table 1. Primers for PCR (oligonucleotide sequences used for amplifications and detection GSTT1 and GSTM1 polymorphisms).

Gene	Primer	Sequence (5'-3')	PCR product size/bp
GSTT1	forward	TTCCTTACTGGTCCTCACATCTC	480
	reverse	TCACCGGATCATGGCCAGCA	
GSTM1	forward	GAACTCCCTGAAAAGCTAAAGC	215
	reverse	GTTGGGCTCAAATATACGGTGG	
CYP1A1	forward	GAACTGCCACTTCAGCTGTCT	312
	reverse	CAGCTGCATTTGGAAGTGCTC	

Statistical analysis

The data are expressed as mean ± standard error (SE). Statistical significance was determined using the Chi-square (χ^2) test. A $p < 0.05$ was considered significant. The magnitude of correlation between variables was done using a SPSS (Chicago, IL) statistical software package (IBM SPSS Statistics 20).

RESULTS

The results of GST polymorphism analyses in the patients with ADs are presented in Table 2 and 3, and Figure 1.

Table 2 shows distribution of GSTT1 and GSTM1 polymorphism, alone or in combinations in patients with ADs, and in the healthy control. The obtained results indicate that the difference in the distribution of GSTT1 null genotype between ADs patients and

control is pretty similar (11.1% vs. 0.0%, respectively), so that the observed difference in distribution of this genotype was not statistically significant ($p > 0.05$). Results distribution of deletion polymorphism GSTT1 and GSTM1 gene indicates the significant frequency of GSTM1 null genotype in patients with ADs, in comparison with the control (44.4% vs. 0.0%, respectively) and that the observed difference is statistically significant ($p < 0.05$). The results analyses of the combined genotypes indicate that GSTT1 positive/GSTM1null genotype is slightly less, as compared to the distribution of genotype GSTT1 positive/GSTM1 positive (33.3% vs. 55.6%, respectively), but the observed difference in distribution of this genotypes was not statistically significant ($p > 0.05$).

Table 2. Distrubution of GSTT1 and GSTM1 genotypes in patients with autoimmune diseases and in control sample.

Polymorphisms	Patients (%)	Controls (%)	p
GSTT1			
positive	8 (88.9)	9 (100%)	$\chi^2 = 1.059, p > 0.05$
null	1 (11.1)	0 (0.0%)	
GSTM1			
positive	5 (55.6)	9 (100%)	$\chi^2 = 5.143, p < 0.05^*$
null	4 (44.4)	0 (0.0%)	
GSTT1/ GSTM1			
positive/positive	5 (55.6)	9 (100%)	$\chi^2 = 5.143, p > 0.05$
positive/null	3 (33.3)	0 (0.0%)	
null/positive	0 (0.0%)	0 (0.0%)	
null/null	1 (11.1)	0 (0.0%)	

Reference group is GSTT1/GSTM1 positive/positive genotype;

* statistically significant difference

Table 3. Distribution of GSTT1 and GSTM1 genotypes in patients depending on the diagnosis of autoimmune disease and in control sample.

Polymorphisms	Patients		Controls (%)	p
	Sclerosis multiplex (%)	Hashimoto's thyroiditis (%)		
GSTT1				
positive	4 (100%)	4 (80.0%)	9 (100%)	$\chi^2 = 2.753; p > 0.05$
null	0 (0.0%)	1 (20.0%)	0 (0.0%)	
GSTM1				
positive	2 (50.0%)	3 (60.0%)	9 (100%)	$\chi^2 = 5.271; p > 0.05$
null	2 (50.0%)	2 (40.0%)	0 (0.0%)	
GSTT1/ GSTM1				
positive/positive	2 (50.0%)	3 (60.0%)	9 (100%)	$\chi^2 = 7.971; p > 0.05$
positive/null	2 (50.0%)	1 (20.0%)	0 (0.0%)	
null/positive	0 (0.0%)	0 (0.0%)	0 (0.0%)	
null/null	0 (0.0%)	1 (20.0%)	0 (0.0%)	

Table 3 shows the distribution of GSTT1 and GSTM1 polymorphism in patients diagnosed according to the ADs, in comparison to the control sample. Differences in the distribution of GSTT1 null/GSTM1 null genotypes in patients, depending on the diagnosis

when compared with the control sample, were not statistically significant. Patients diagnosed with HT had a higher frequency of GSTT1 null/GSTM1 null genotypes, compared to the control sample (20.0% vs. 0.0%, respectively), but with no statistical significance. Those patients were used to observe twice the size GSTT1 null genotype compared to the control sample, but also without statistical significance. In patients who were diagnosed with MS the GSTT1 gene deletions were observed, and regarding the frequency of GSTM1 deletion there was also no statistically significant difference compared to the control sample. In relation to the diagnosis, the distribution of GSTM1 null genotype is almost equally represented.

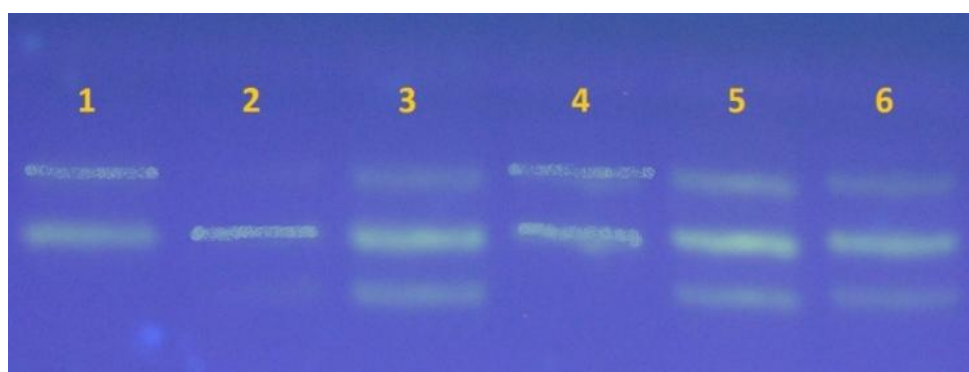


Figure 1. Multiplex PCR products separated and analyzed on 2% agarose gel:
 Lines 1 and 4 patients with GSTT1 positive and GSTM1 null genotypes;
 line 2 patient with GSTT1 null and GSTM1 null genotypes;
 lines 3, 5 and 6 patients with GSTT1 positive and GSTM1 positive genotypes.

DISCUSSION

In this preliminary study we investigated the possible influence of GSTT1 and GSTM1 null genotypes on the risk of development ADs. Previous studies have observed that their mutations could be associated with different diseases, including cancer (HAQ and HARMER, 2004; CILENŠEK *et al.*, 2012; STOŠIĆ *et al.*, 2014; MILOŠEVIĆ-DJORDJEVIĆ *et al.*, 2017). What might be important in different diseases is the glutathione S-transferases (GSTs), as the main enzymes of antioxidant defense. The inactivation of toxic endogenous products and xenobiotic agents, the removal of ROS and catalysis of reactions in metabolic pathway beyond the detoxification are some of the roles of the GSTs in cells (SHEENAN *et al.*, 2001; HAYES *et al.*, 2005). A number of studies report that ROS play a key role in myelin phagocytosis, contributing to several of the processes underlying MS pathogenesis (TASSET *et al.*, 2012; FERREIRA *et al.*, 2013; OHL *et al.*, 2016). The impact of GSTs detoxification pathway on complex pathogenesis and heterogeneity of clinical findings in MS, particularly the exact correlation between indicators of clinical severity and different GST genotypes, has not yet been fully elucidated (BAČIĆ BARONICA *et al.*, 2014).

Several studies have examined associations between GSTT1 and GSTM1 polymorphisms and ADs, but the results reported are contradictory, possibly because of the low statistical power of individual studies (LEE *et al.*, 2015). While some authors suggest that there is an association of GSTT1 and GSTM1 polymorphisms and these diseases (MANN *et al.*, 2000; ŽIVKOVIĆ *et al.*, 2013), other authors indicate that there is no association between them (STAVROPOULOU *et al.*, 2007).

Our results showed that the difference in distribution of GSTT1 null genotype between ADs patients and control sample is quite similar, so the observed difference was not

statistically significant ($p > 0.05$) and there is no association between occurrence of ADs and deletion of GSTT1 gene. These results were in accordance with results STAVROPOULOU *et al.* (2007) which investigated polymorphism of these genes in sample of 47 patients with MS (18 males and 29 females), and in the control sample of healthy donors. These authors also showed no significant difference in distribution GSTT1 null genotype between patients (19.1%) and control sample (18.8%).

On the other hand, the results of our study clearly indicate the statistical significantly difference in distribution of GSTM1 null genotype between ADs patients and control sample (44.4% vs. 0.0%, respectively) which can indicate that exists association between occurrence of ADs and deletion of GSTM1 gene. On the contrary to these findings, STAVROPOULOU *et al.* (2007) showed that there is no significant difference in the distribution of GSTM1 null genotype between patients with MS and the control (53.2% vs. 38.8%, respectively). In addition, the same authors found the higher incidence of GSTM1 null genotype observed in female patients, suggests a possible role of the GSTM1 detoxification pathway in a gender-dependent manner.

However, the homozygous deletion of both analyzed genes (GSTT1 null/GSTM1 null) showed no significant differences between the genotypes in patients with ADs and control sample (11.1% vs 0.0%, respectively). Statistically significant difference in the distribution of GSTM1 null genotype in the sample of patients in comparison to the control is lost, when analyzing the same polymorphism, giving due consideration to the diagnosis, which can be explained by small sample size. The fact that the GSTT1 and GSTM1 null genotypes were associated with severe disability in patients with a disease duration of more than 10 years, MANN *et al.* (2000) pointed out that long-term prognosis in MS is influenced by the ability to remove the toxic products of oxidative stress. MANN *et al.* (2000) showed that the GSTT1 and GSTM1 null genotypes were associated with severe disability in patients with a disease duration of more than 10 years. These results indicate that long-term prognosis in MS is influenced by the ability to remove the toxic products of oxidative stress.

ŽIVKOVIĆ *et al.* (2013) in recently conducted study have shown that patients with MS have significantly higher frequency of GSTT1 null genotype in relation to the control group (37.36% vs. 21.86%, respectively). This study has shown that there is a significant association between a MS and deletions GSTT1 gene. The same authors also detected the significantly higher frequency of double deletions (GSTM1 null/GSTT1 null) in patients with MS compared to controls.

Our results showed that observed differences in the distribution of GSTT1 and GSTM1 null genotype in patients, depending on the diagnosis (MS or HT) when compared to the same frequency of genotypes in control group, were not statistically significant ($p > 0.05$). In our study the patients with HT had a higher frequency of GSTM1 null genotype compared to the control group (20.0% vs. 0.0%, respectively), but without statistical significance. The same patients were used to observe double higher frequency of GSTM1 null genotype compared to control sample, but also without statistical significance. In patients with MS the deletion of GSTT1 gene was not observed, and there is no statistical significant difference in frequency of GSTM1 deletion compared to control sample. Recently conducted meta-analysis demonstrates that the GSTT1 null genotype is associated with MS in Caucasian populations (LEE *et al.*, 2015).

CONCLUSION

Based on the results of this study we conclude that GSTM1 gene has a important role in development of ADs. Most likely, this gene affects the incidence of ADs by a reduced or complete dysfunction of encoded enzyme. Future researches of both polymorphisms (GSTT1 and GSTM1) on a larger sample will contribute to a better understanding of their participation in ethiopathology of these diseases. Considering the fact that these diseases are not so rare, future studies should explore not only the role of genotype of both genes (GSTT1 and GSTM1), but also the potential role of other polymorphisms as genetic factors that lead to ADs.

Acknowledgments

This study was supported by the Ministry of Education, Science and Technological Development of the Republic of Serbia for financial support (Project No. III 41010).

References:

- [1] ABDEL-RAHMAN, S.Z., EL-ZEIN, R.A., ANWAR, W.A., AU, W.W. (1996): A multiplex PCR procedure for polymorphic analysis of GSTM1 and GSTT1 genes in population studies. *Cancer Letters* **107** (2): 229-233.
- [2] ACHARYA, U.R., SREE, S.V., KRISHNAN, M.M., MOLINARI, F., ZIELEŹNIK, W., BARDALES, R.H., WITKOWSKA, A., SURI, J.S. (2014): Computer-aided diagnostic system for detection of Hashimoto thyroiditis on ultrasound images from a Polish population. *Journal Ultrasound in Medicine* **33** (2): 245-253. doi: 10.7863/ultra.33.2.245
- [3] ADAMCZYK, B., NIEDZIELA, N., ADAMCZYK-SOWA, M. (2017): Chapter 10 Novel Approaches of Oxidative Stress Mechanisms in the Multiple Sclerosis Pathophysiology and Therapy. In: Zagon, I.S., McLaughlin, P.J. (eds.) *Multiple Sclerosis: Perspectives in Treatment and Pathogenesis*. Brisbane (AU), Codon Publications.
- [4] ALLEN, A.G., TRESINI, M. (2000): Oxidative stress and gene regulation. *Free Radical Biology & Medicine* **28** (3): 463-499.
- [5] ANTONIOU, D.I., GEORGITSI, M.A., GKANTOUNA, V.A., PATRINOS, G.P., POULAS, K.A., TSAKALIDIS, A.K., TZIMAS, G.E., VIENNAS, E.S. (2010): dAUTObase: Mining gems on autoimmune diseases utilizing web visualization technologies. In: Proceedings of the 10th IEEE International Conference on Information Technology and Applications in Biomedicine (ITAB 2010), Nov. 2010, Corfu, Greece, pp. 1-5.
- [6] BAČIĆ BARONICA, K., MLINAC, K., PETLEVSKI, R., OZRETIĆ, D., VLADIĆ, A., BOGNAR KALANJ, S., ŽUNTAR, I. (2014): Progression of multiple sclerosis is associated with gender differences in glutathione S-transferase P1 detoxification pathway. *Acta Neurobiologiae Experimentalis* **74** (3): 257-265.
- [7] CILENŠEK, I., MANKOČ, S., GLOBOČNIK PETROVIČ, M., PETROVIČ, D. (2012): GSTT1 null genotype is a risk factor for diabetic retinopathy in Caucasians with type 2 diabetes, whereas GSTM1 null genotype might confer protection against retinopathy. *Disease Markers* **32** (2): 93-99. doi: 10.3233/DMA-2011-0863

- [8] TODOROVIĆ-ĐILAS, L.J., IČIN, T., NOVAKOVIĆ-PARO, J., BAJKIN, I. (2011): Autoimuna bolest štitaste žlezde i druge neendokrinološke autoimune bolesti. *Medicinski Pregled* **64** (3-4): 183-187. doi: 10.2298/MPNS1104183T [in Serbian with English summary]
- [9] ĐURICA, S., VUKSANOVIĆ, M. (2005): Autoimunska bolest tireoideje. *Medicinski glasnik* **38**: 39-48.
- [10] ERMANN, J., FATHMAN, C.G. (2001): Autoimmune diseases: genes, bugs and failed regulation. *Nature Immunology* **2**: 759-761.
- [11] FERREIRA, B., MENDES, F., OSÓRIO, N., CASEIRO, A., GABRIEL, A., VALADO, A. (2013): Glutathione in multiple sclerosis. *British Journal of Biomedical Science* **70** (2):75-79. doi: 10.1080/09674845.2013.11669939
- [12] GARTE, S., GASPARI, L., ALEXANDRIE, A.K., AMBROSONE, C., AUTRUP, H., AUTRUP, J.L., BARANOVA, H., BATHUM, L., BENHAMOU, S., BOFFETTA, P., BOUCHARDY, C., BRESKVAR, K., BROCKMOLLER, J., CASCORBI, I., CLAPPER, M.L., COUTELLE, C., DALY, A., DELL'OMO, M., DOLZAN, V., DRESLER, C.M., FRYER, A., HAUGEN, A., HEIN, D.W., HILDESHEIM, A., HIRVONEN, A., HSIEH, L.L., INGELMAN-SUNDBERG, M., KALINA, I., KANG, D., KIHARA, M., KIYOHARA, C., KREMERS, P., LAZARUS, P., LE MARCHAND, L., LECHNER, M.C., VAN LIESHOUT, E.M., LONDON, S., MANNI, J.J., MAUGARD, C.M., MORITA, S., NAZAR-STEWART, V., NODA, K., ODA, Y., PARL, F.F., PASTORELLI, R., PERSSON, I., PETERS, W.H., RANNUG, A., REBBECK, T., RISCH, A., ROELANDT, L., ROMKES, M., RYBERG, D., SALAGOVIC, J., SCHOKET, B., SEIDEGARD, J., SHIELDS, P.G., SIM, E., SINNET, D., STRANGE, R.C., STÜCKER, I., SUGIMURA, H., TO-FIGUERAS, J., VINEIS, P., YU, M.C., TAIOLI, E. (2001): Metabolic gene polymorphism frequencies in control populations. *Cancer epidemiology, Biomarkers & Prevention* **10** (12): 1239-1248.
- [13] GERENOVA, J., GADJEVA, V. (2007): Oxidative stress and antioxidant enzyme activities in patients with Hashimoto's thyroiditis. *Comparative Clinical Pathology* **16** (4): 259-264. doi: 10.1007/s00580-007-0689-8
- [14] GOUGH, S.C., SIMMONDS, M.J. (2007): The HLA region and autoimmune disease: associations and mechanisms of action. *Current Genomics* **8** (7): 453-465. doi: 10.2174/138920207783591690
- [15] HAQ, M., HARMER, C. (2004): Thyroid cancer: an overview. *Nuclear Medicine Communications* **25** (9): 861-867.
- [16] HAYES, J.D., FLANAGAN, J.U., JOWSEY, I.R. (2005): Glutathione transferases. *Annual Review of Pharmacology and Toxicology* **45**: 51-88. doi: 10.1146/annurev.pharmtox.45.120403.095857
- [17] LEE, Y.H., SEO, Y.H., KIM, J.H., CHOI, S.J., JI, J.D., SONG, G.G. (2015): Meta-analysis of associations between MTHFR and GST polymorphisms and susceptibility to multiple sclerosis. *Neurological Sciences* **36** (11): 2089-2096. doi: 10.1007/s10072-015-2318-7
- [18] MANN, C.L., DAVIES, M.B., BOGGILD, M.D., ALLDERSEA, J., FRYER, A.A., JONES, P.W., KO KO, C., YOUNG, C., STRANGE, R.C., HAWKINS, C.P. (2000): Glutathione S-transferase polymorphisms in MS: their relationship to disability. *Neurology* **8** (3): 552-557.
- [19] MILOŠEVIĆ-DJORDJEVIĆ, O., GRUJIČIĆ, D., RADOVIĆ-JAKOVLJEVIĆ, M., MARINKOVIĆ, D., DIMITRIJEVIĆ, S., MIHALJEVIĆ, O., MIJATOVIĆ-TEODOROVIĆ, L.J., ŽIVANČEVIĆ-SIMONOVIĆ S. (2017): Influence of *GSTT1* and *GSTM1* null genotypes on differentiated

thyroid cancer risk and baseline and radioiodine induced cytogenetic damage in peripheral blood lymphocytes of patients. *Genetika* **49** (2): 599-611.
doi: 10.2298/GENSR1702599M

- [20] OHL, K., TENBROCK, K., KIPP, M. (2016): Oxidative stress in multiple sclerosis: Central and peripheral mode of action. *Experimental Neurology* **277**: 58-67.
doi: 10.1016/j.expneurol.2015.11.010
- [21] PENDER, M.P., GREER, J.M. (2007): Immunology of multiple sclerosis. *Current Allergy and Asthma Reports* **7** (4): 285–292. doi: 10.1007/s11882-007-0043-x
- [22] RAY, S., SONTALIA, N., KUNDU, S., GANGULY, S. (2012): Autoimmune Disorders: An Overview of Molecular and Cellular Basis in Today's Perspective. *Journal of Clinical & Cellular Immunology* S10:003. doi: 10.4172/2155-9899.S10-003
- [23] RIEGER, R., GERSHWIN, M.E. (2007): The X and why of xenobiotics in primary biliary cirrhosis. *Journal of Autoimmunity* **28** (2-3): 76–84. doi: 10.1016/j.jaut.2007.02.003
- [24] SHEENAN, D., MEADE, G., FOLEY, V.M., DOWD, C.A. (2001): Structure, function, and evolution of glutathione transferases: implications for classification of non-mammalian members of an ancient enzyme superfamily. *Biochemical Journal* **360** (Pt 1): 1-16.
- [25] STAVROPOULOU, C., KORAKAKI, D., RIGANA, H., VOUTSINAS, G., POLYZOI, M., GEORGAKAKOS, V.N., MANOLA, K.N., KARAGEORGIU, C.E., SAMBANI, C. (2007): Glutathione-S-transferase T1 and M1 gene polymorphisms in Greek patients with multiple sclerosis: a pilot study. *European Journal of Neurology* **14** (5): 572-574. doi: 10.1111/j.1468-1331.2006.01678.x
- [26] STOŠIĆ, I., GRUJIĆ, D., ARSENIJEVIĆ, S., BRKIĆ, M., MILOŠEVIĆ-DJORDJEVIĆ, O. (2014): Glutathione S-transferase T1 and M1 polymorphisms and risk of uterine cervical lesions in women from central Serbia. *Asian Pacific Journal of Cancer Prevention* **15**: 3201-3205. doi: 10.7314/APJCP.2014.15.7.3201
- [27] TASSET, I., AGÜERA, E., SÁNCHEZ-LÓPEZ, F., FEIJÓO, M., GIRALDO, A.I., CRUZ, A.H., GASCÓN, F., TÚNEZ, I. (2012): Peripheral Oxidative Stress in Relapsing-Remitting Multiple Sclerosis. *Clinical biochemistry* **45** (6): 440-444.
doi: 10.1016/j.clinbiochem.2012.01.023
- [28] WEST, I.C. (2000): Radical and oxidative stress in diabetes. *Diabetic Medicine* **17** (3): 171-180. doi: 10.1046/j.1464-5491.2000.00259.x
- [29] ŽIVKOVIĆ, M., ŽIVOTIĆ, I., DINČIĆ, E., STOJKOVIĆ, L., VOJINOVIĆ, S., STANKOVIĆ, A. (2013): The glutathione S-transferase T1 deletion is associated with susceptibility to multiple sclerosis. *Journal of the Neurological Sciences* **15** (1-2): 6-9. doi: 10.1016/j.jns.2013.07.001

